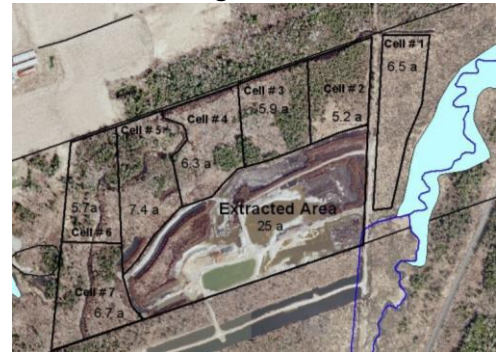


PEAT EXTRACTION and WETLAND RESTORATION, SIMCOE COUNTY, ONTARIO

Peat mining is an ongoing activity in many locations in North America. Peat deposits develop at locations that were previously shallow lakes and emergent wetlands. Peat extraction requires extensive permitting and regulatory compliance with approvals at the regional, provincial, and federal level. Extensive mitigation/restoration with long-term monitoring was required at this 50 acre site in southern Ontario. Several wetland types were present on this property including a Red Cedar/White Birch Forested Wetland, an Aspen-Mixed Shrub Wetland, and several riparian shrub wetlands. A shallow emergent wetland was designed to mitigate for losses.



Pre-mining site conditions



Extraction Sequence Map



Active Peat Mining



Peat extracted from cell



Post Mining Condition Prior to Restoration

For additional information contact Dr. Bruce Dickson at 814-806-6073 or bdickson@redhorseenvironmental.com