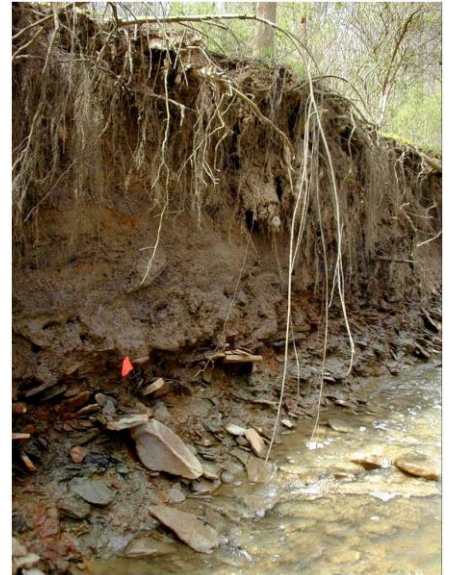




PO Box 148
Tionesta, PA 16353
814-806-6073
www.redhorseenvironmental.com

Pittsburgh International Airport Stream and Wetland Assessment

A comprehensive stream assessment was conducted for two (2) drainages, the East Fork of Enlow Run and the West Fork of McClarens Run on a property located in Moon and Findlay Townships in Allegheny County, Pennsylvania. These two (2) streams drain the majority of the land area occupied by the Pittsburgh International Airport. The stream assessment was one of several studies to be completed as part of an environmental assessment for a treatment facility to remove deicing agents from airport runoff. These two streams capture most of the airport runoff and have been affected by loadings of deicing materials and significantly variability storm discharges. This project included a comprehensive stream assessment including a benthic macroinvertebrate study, water quality monitoring, fish community assessment, riparian assessment, and a geomorphologic study. The stream corridors and other airport locations also contained significant wetland resources requiring U.S. Army Corps delineations. Findings indicated that stream incision was impacting riparian wetlands and in-stream habitat and fish and benthic communities were being negatively affected by deicing agents and severe habitat degradation.



For additional information contact Dr. Bruce Dickson at 814-806-6073 or
bdickson@redhorseenvironmental.com